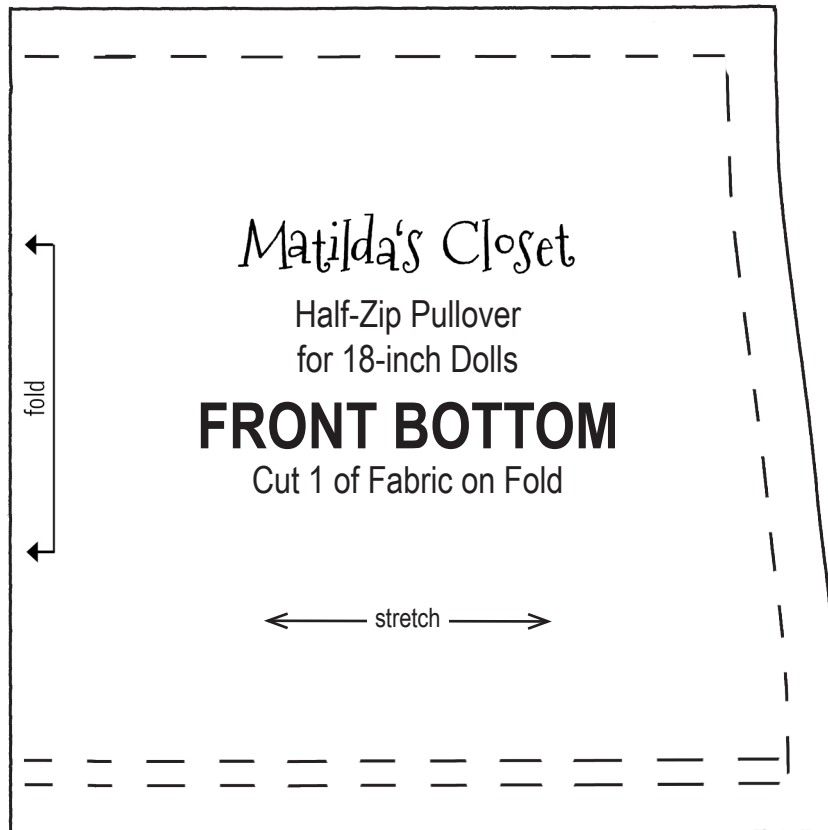
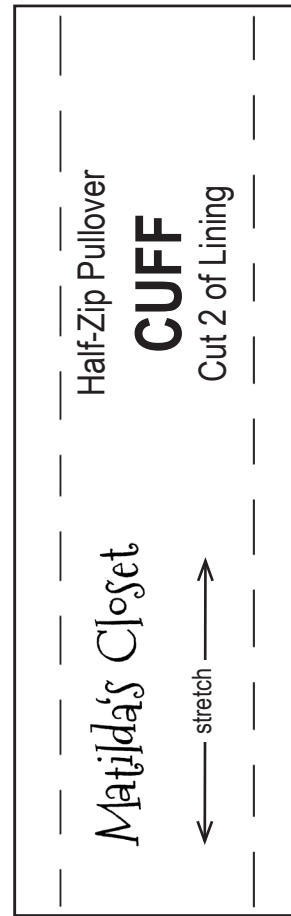
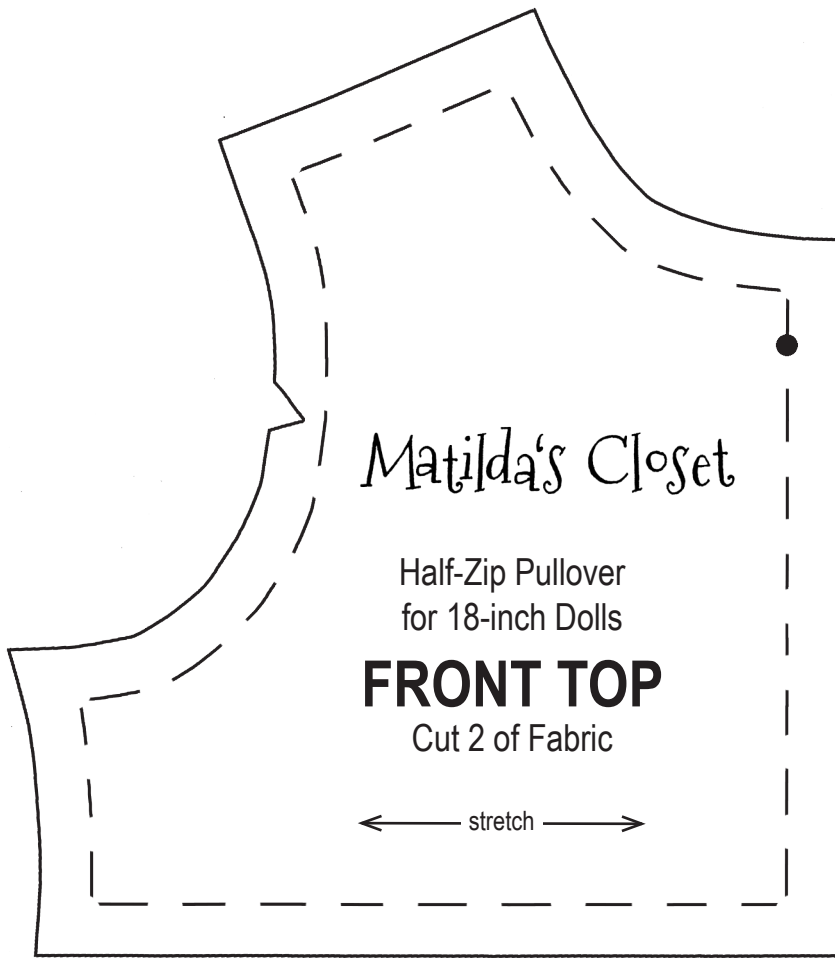


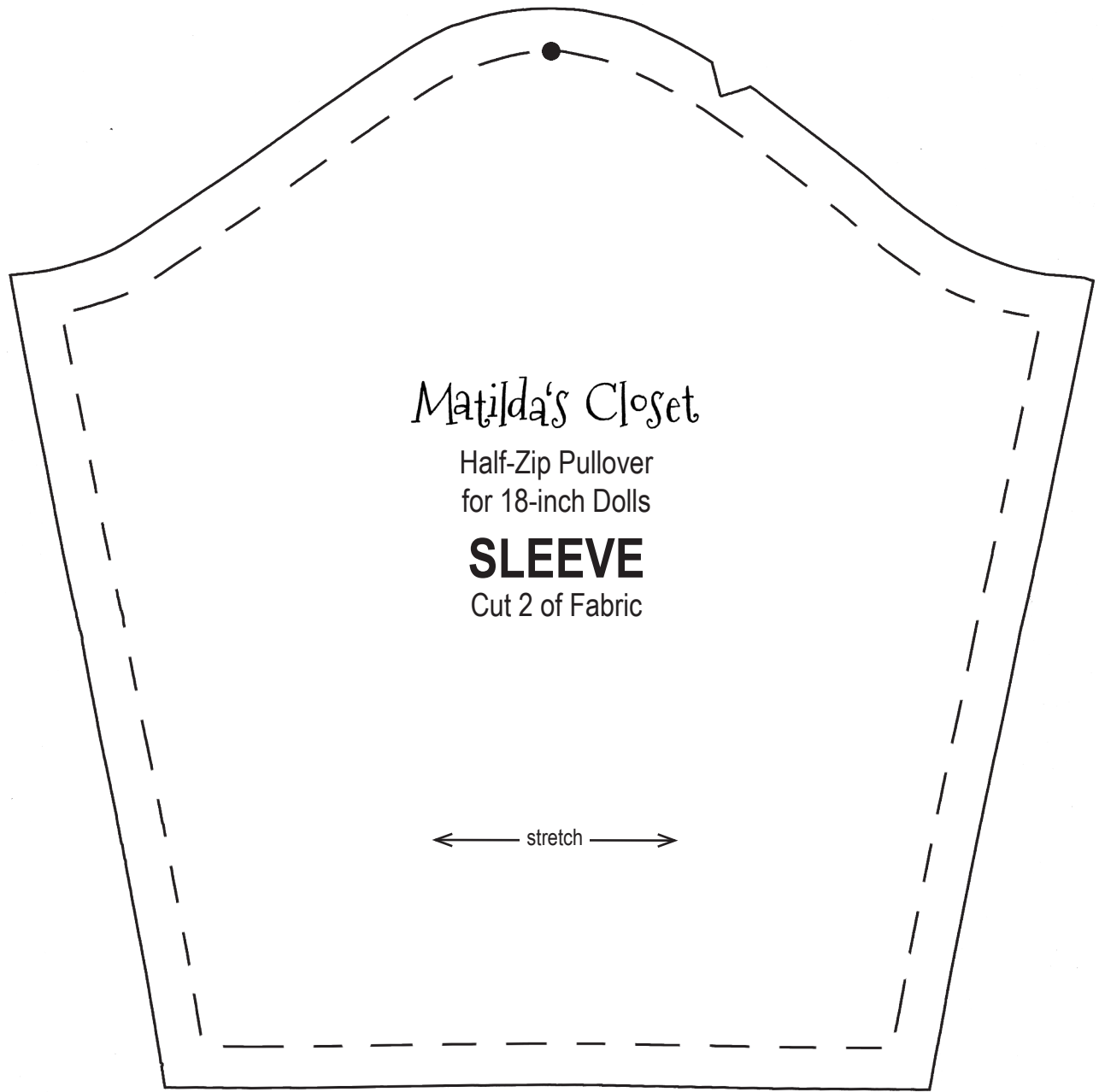
Printer Check:
1 inch





Printer Check:
1 inch





Matilda's Closet

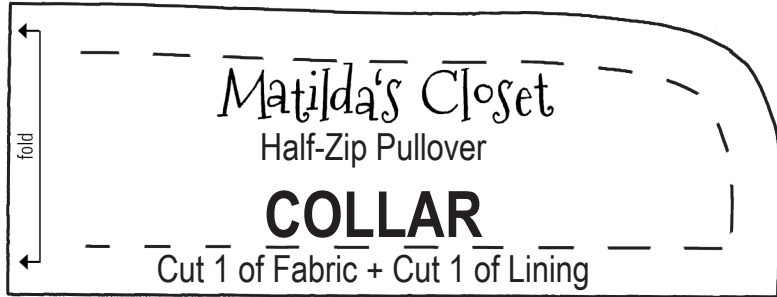
Half-Zip Pullover
for 18-inch Dolls

SLEEVE

Cut 2 of Fabric

← stretch →

Printer Check:
1 inch



Matilda's Closet

Half-Zip Pullover

COLLAR

Cut 1 of Fabric + Cut 1 of Lining

fold

