

**18-inch Doll Pieces**  
**pages 35-43**

*Matilda's Closet*

Frilled to See You  
Top & Skort Set  
for 18-inch Dolls

**SHIRT**  
**FRONT CENTER**

Cut 1 on Fold  
of Main Fabric

grain

fold

*Matilda's Closet*

Frilled to See You  
Top & Skort Set  
for 18-inch Dolls

**SHIRT FRONT SIDE**  
Cut 2  
of Main Fabric

grain

*Matilda's Closet*

Frilled to See You  
Top & Skort Set  
for 18-inch Dolls

**SHIRT**  
**BACK CENTER**

Cut 2  
of Main Fabric

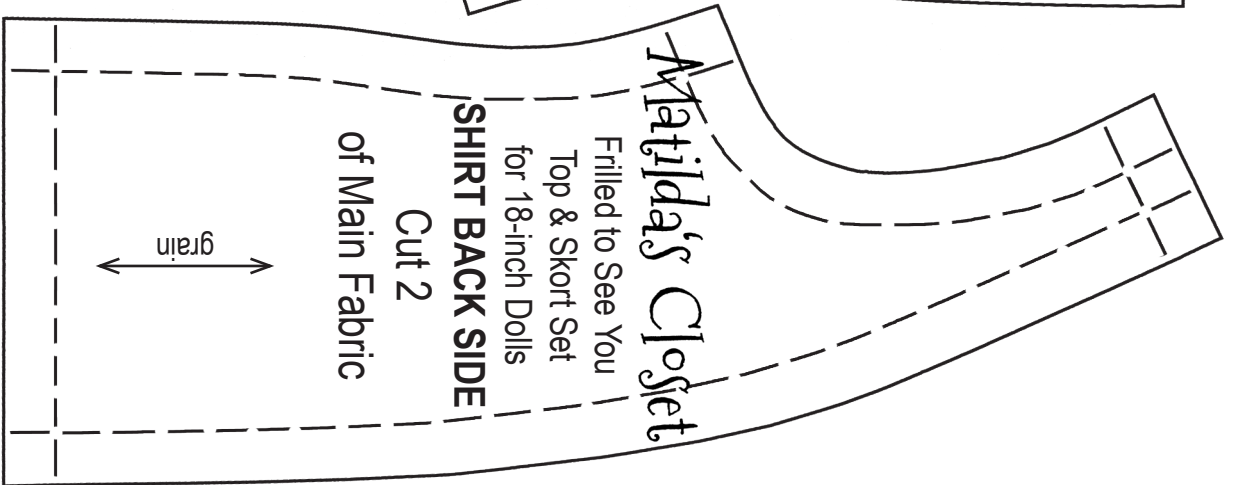
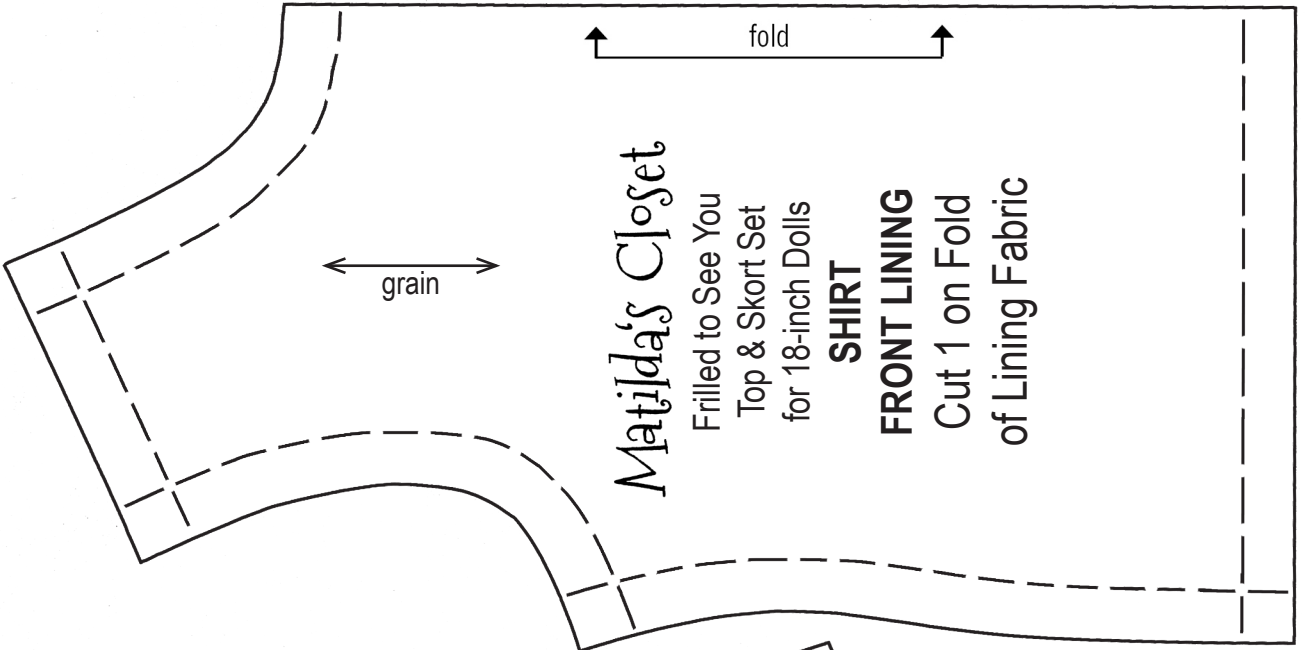
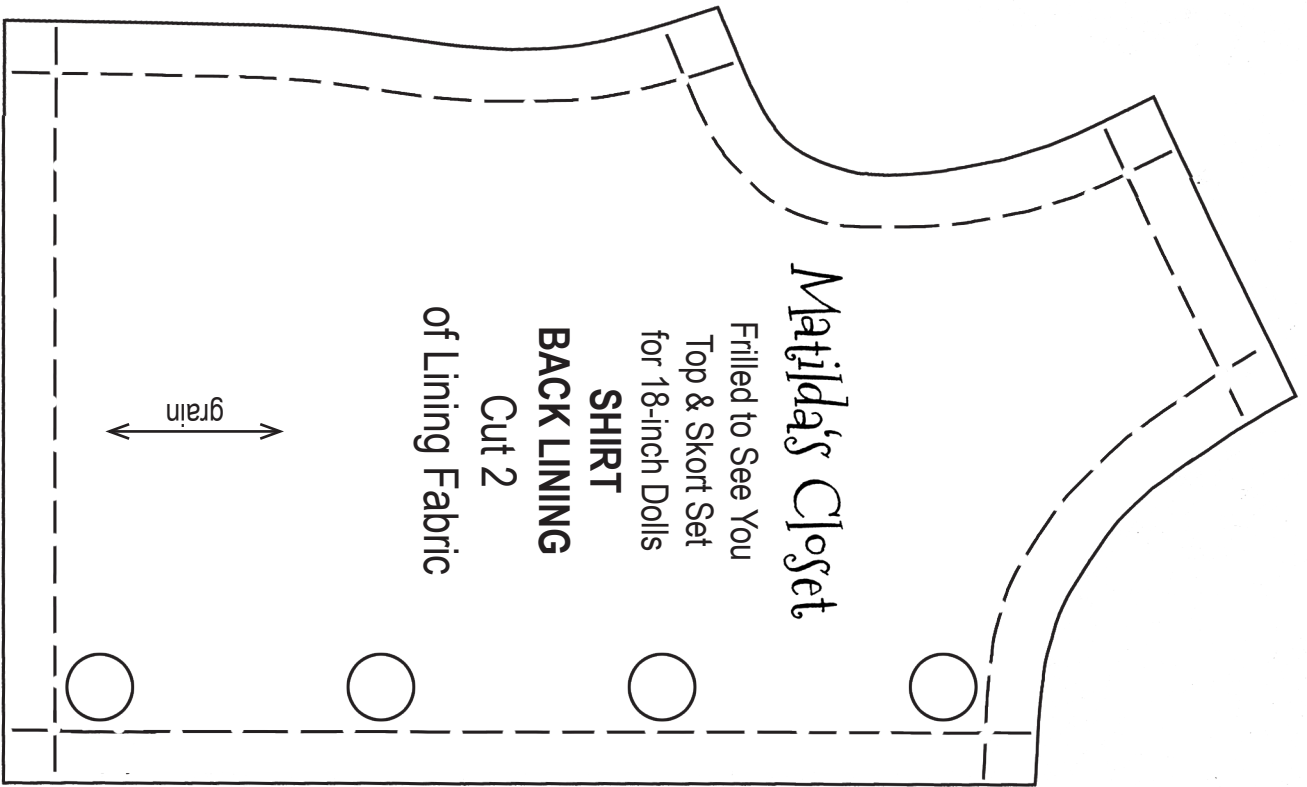
grain

Printer Check:  
1 inch

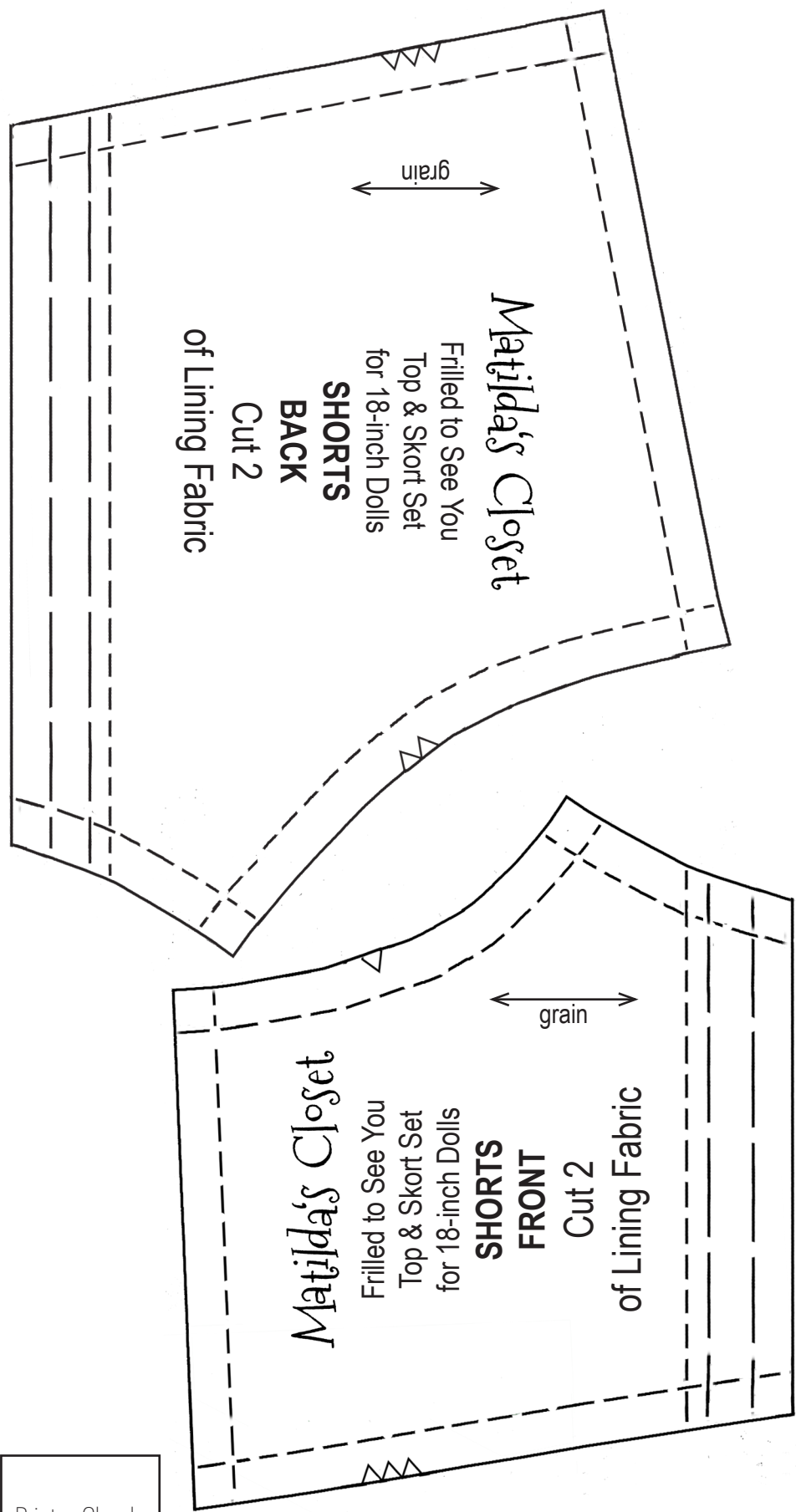
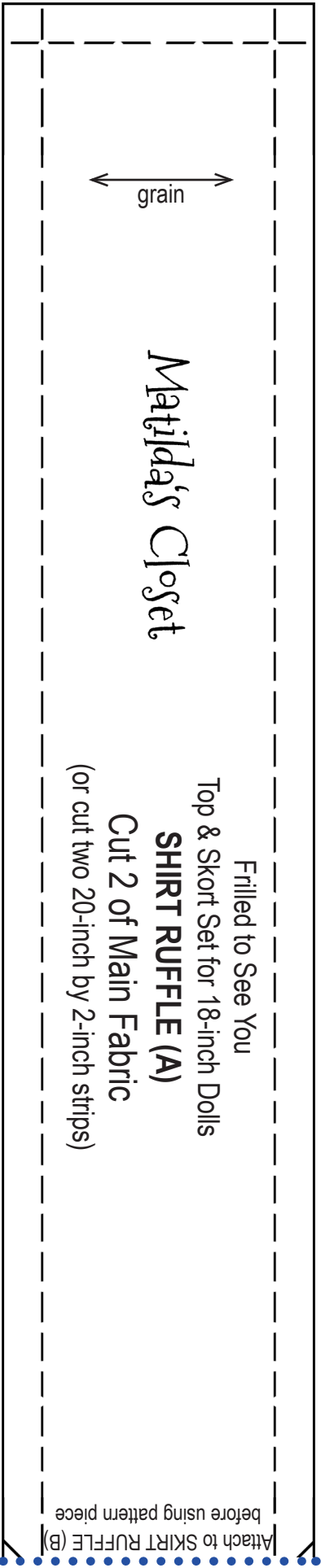
PRINTING TIP: Make sure you print each page at 100% (with no scaling).

Double-check the size on your printed page using the Printer Check box on the left.





Printer Check:  
1 inch



Printer Check:  
1 inch

Attach to SKIRT RUFFLE (A)  
before using pattern piece

Frilled to See You  
Top & Skort Set for 18-inch Dolls  
**SHIRT RUFFLE (B)**

Matilda's Closet

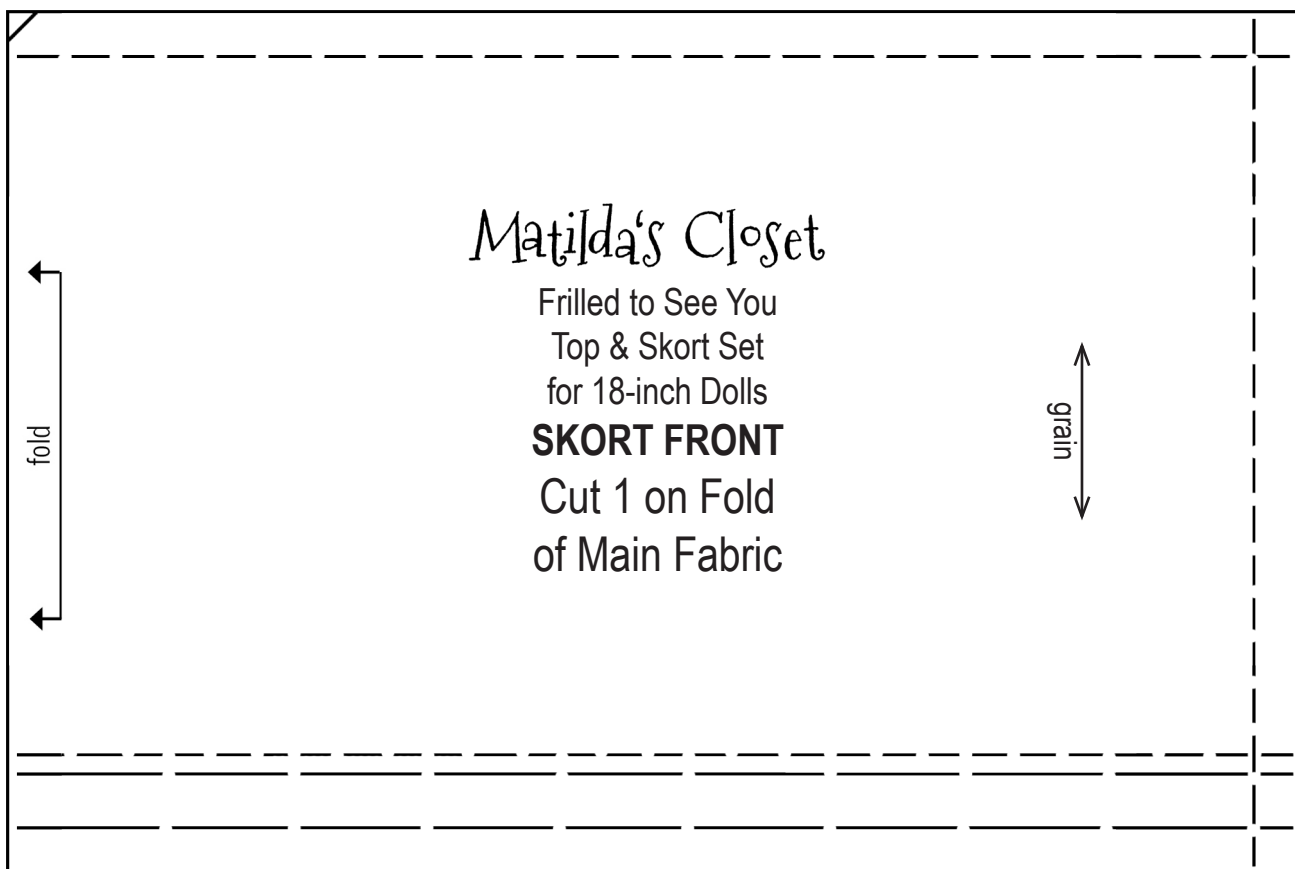
Matilda's Closet

Frilled to See You  
Top & Skort Set  
for 18-inch Dolls  
**SKORT BACK**  
Cut 1 on Fold  
of Main Fabric

fold

grain

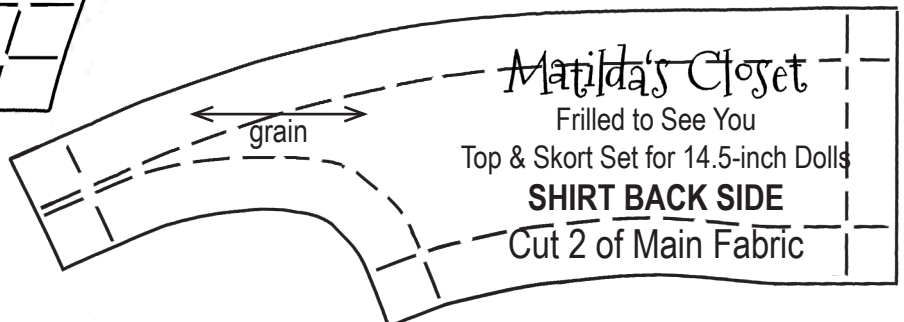
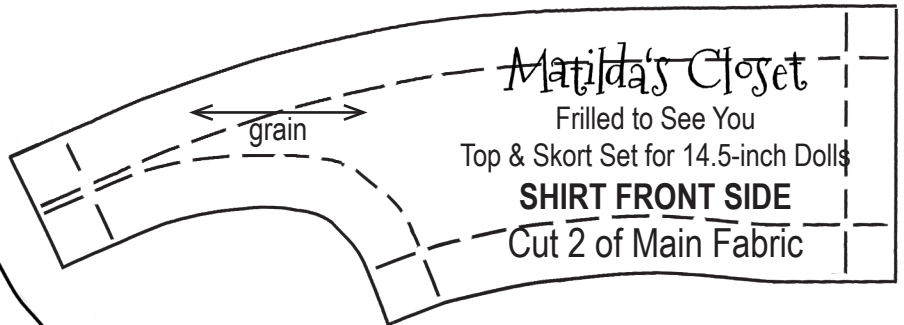
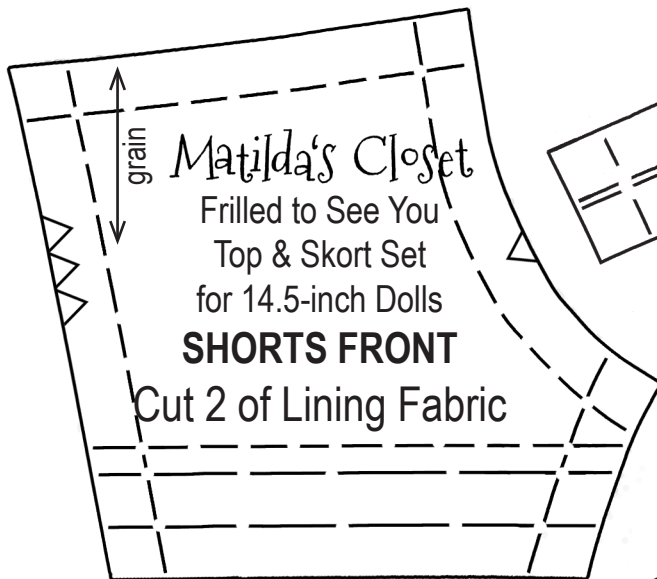
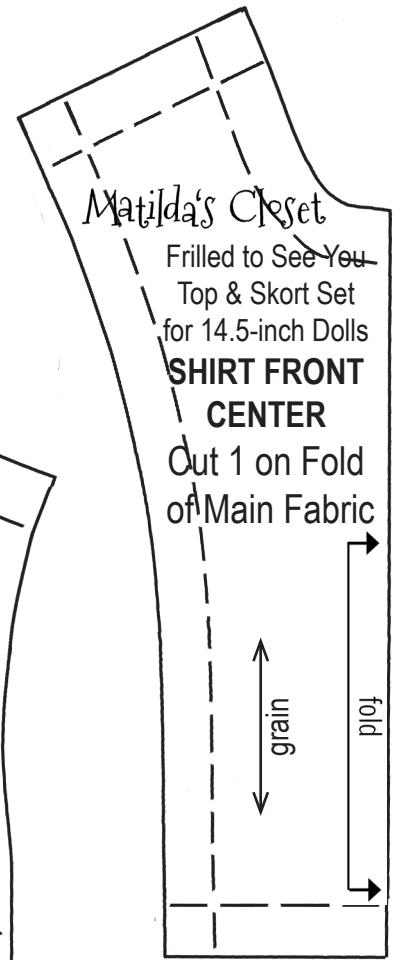
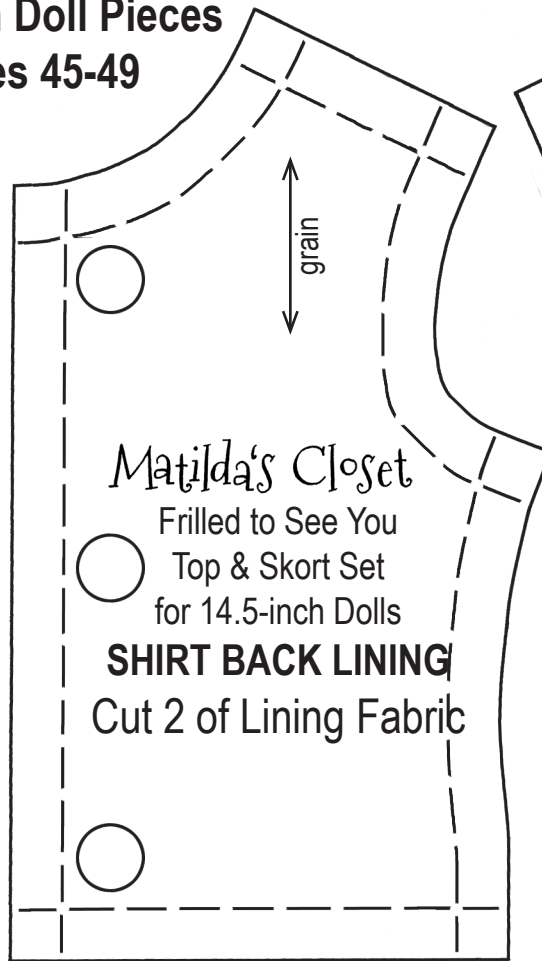
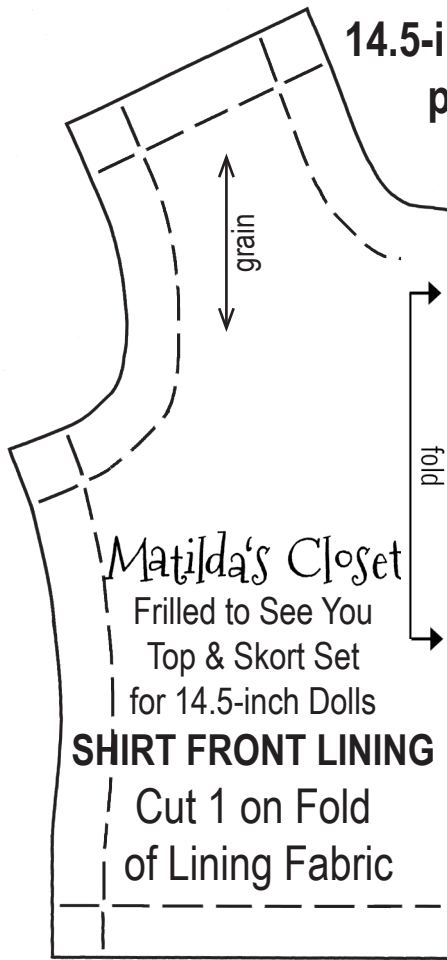
Printer Check:  
1 inch



Printer Check:  
 1 inch

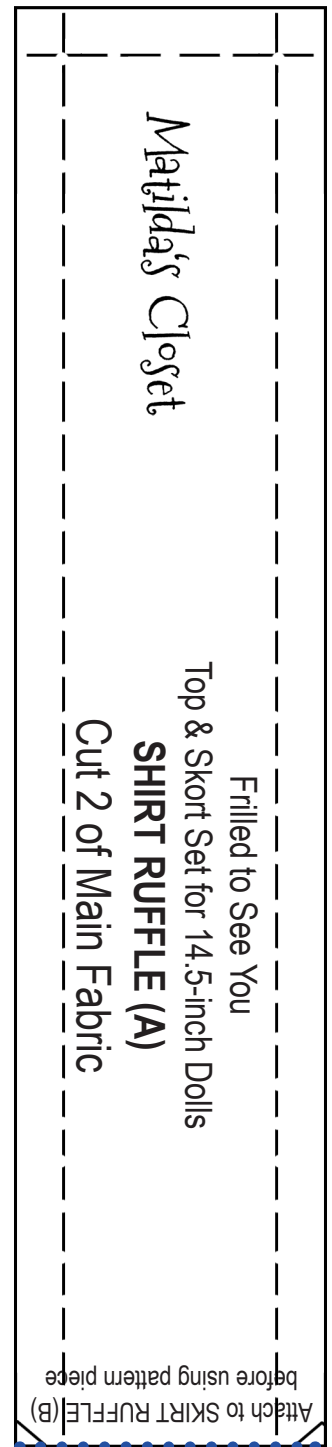
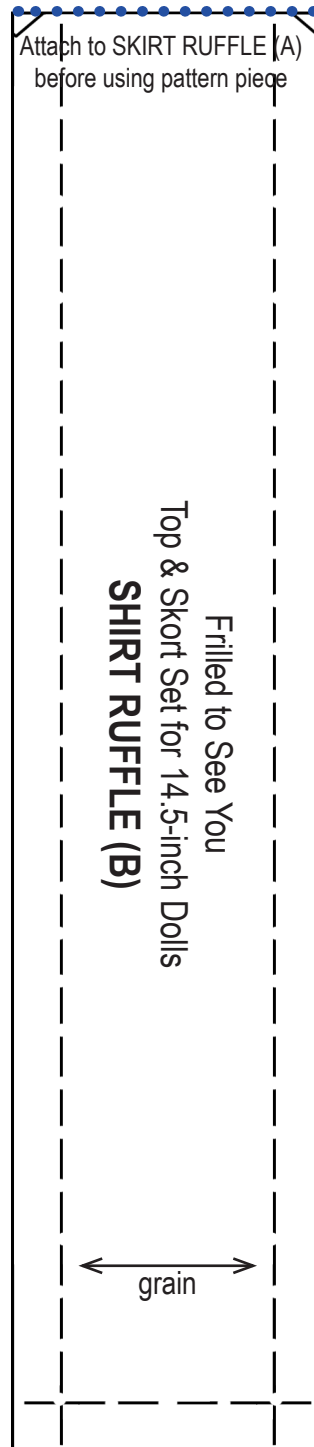
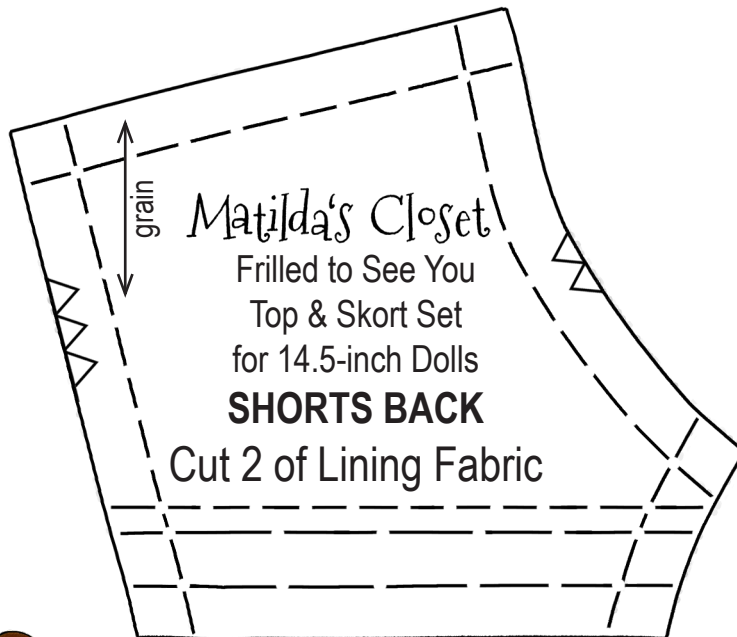
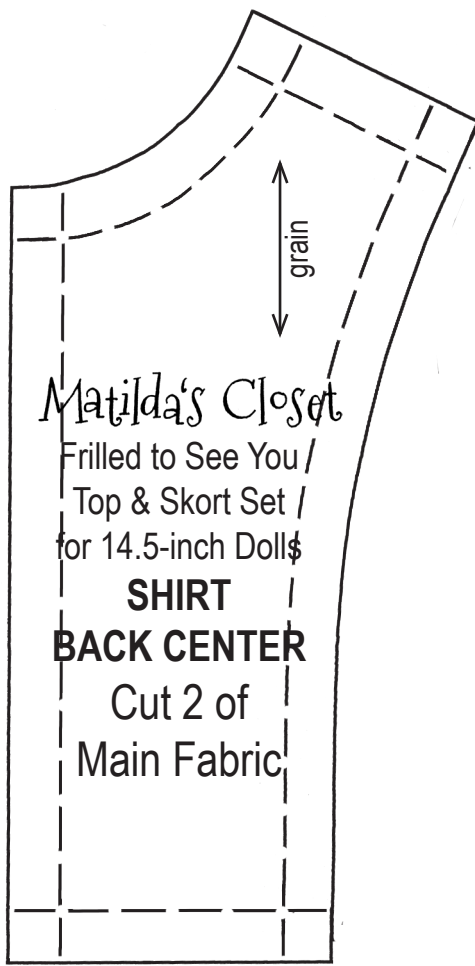


**14.5-inch Doll Pieces**  
**pages 45-49**



Printer Check:  
1 inch





Printer Check:  
1 inch





Printer Check:  
1 inch

